

OptiCut 150 series - DimterLine

Versatile production,
Crosscutting without compromise!



Maximum grip

The air-filled grooved tires of the top pressure rollers are individually pneumatically spring-loaded and thus allow more difference in the timber thickness. The air-filled tires make it possible to process heavy timber without any problems. A high continuous performance is achieved by interference-free operation.



Safely disposed

With the waste disposal via the automatic waste gate, the sorting works particularly reliable. All parts arrive where they should be.



Pretty big

With the OptiCut 150 you not only cut particular coarse timber, but also extreme cross-sections whether wide or thick, the OptiCut 150 processes everything.



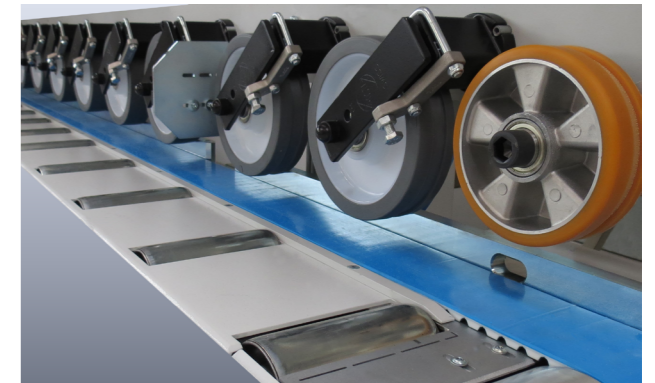
Difficult made easy

The pointed ends are recognized by a special device and can be treated as waste in the defined manner. By means of an extended cylinder stroke of the pressure and feed rollers, tapering timber can be processed in a controlled manner.



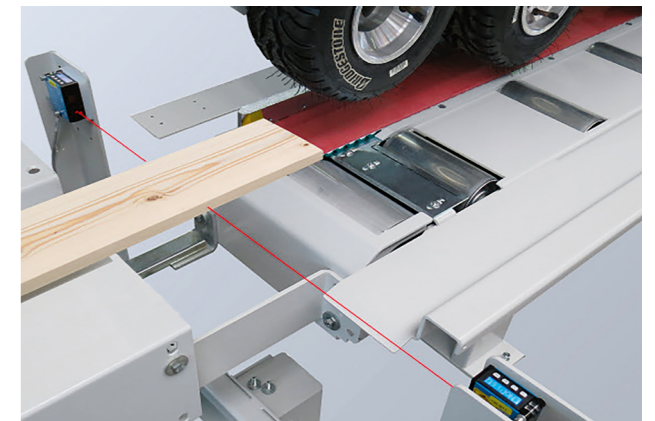
Maximum performance

Reliable feeding of heavy and difficult timber thanks to the proven toothed belt system and feed rollers from above.



Spot on

Contact-free detection of the workpiece width by the width measuring system. For the automatic crosscutting of up to 16 different products, the software reverts to the corresponding product list, depending on the measured workpiece width.

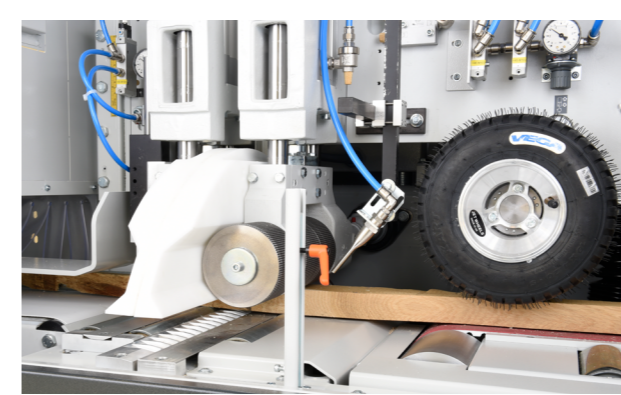


WEINIG OPTICUT 150 – DimterLine:

Unrivaled good

The machine concept is convincing in the harsh daily production and keeps what it promises: flexibility with the highest productivity in continuous operation. Depending on the application, this means: double capacity, halved labor costs and considerable timber savings at maximum yield. The OptiCut 150 impresses with its universality. The top driven feed rollers follow the wood contour and allow the processing of rough timber qualities.

The automatic optimizing crosscut saw OptiCut 150 convinces with the highest possible cutting accuracy, the simplest operation, unrestricted reliability in continuous operation and its versatility.



Uncompromising

Driven feed rollers from above ensure trouble-free transport and position each board exactly, even coarse boards, curved boards and boards with rough surface.

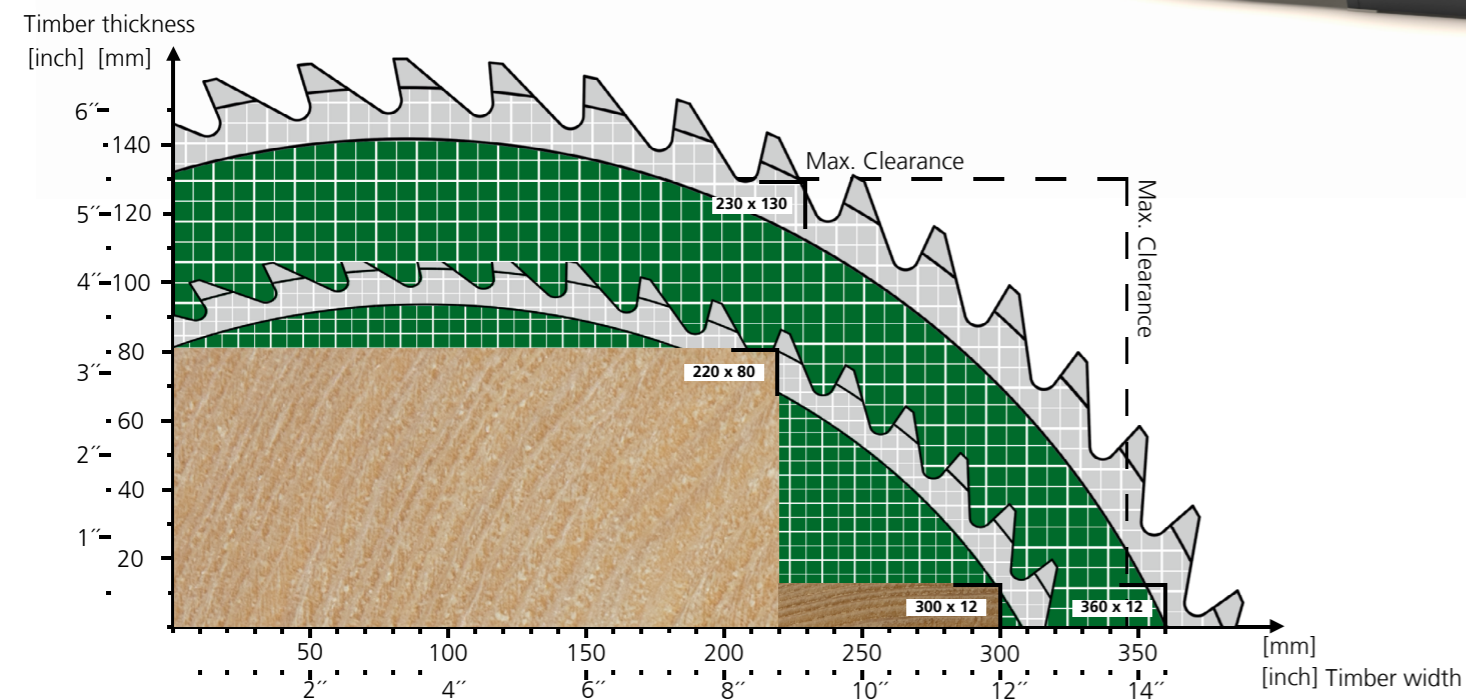
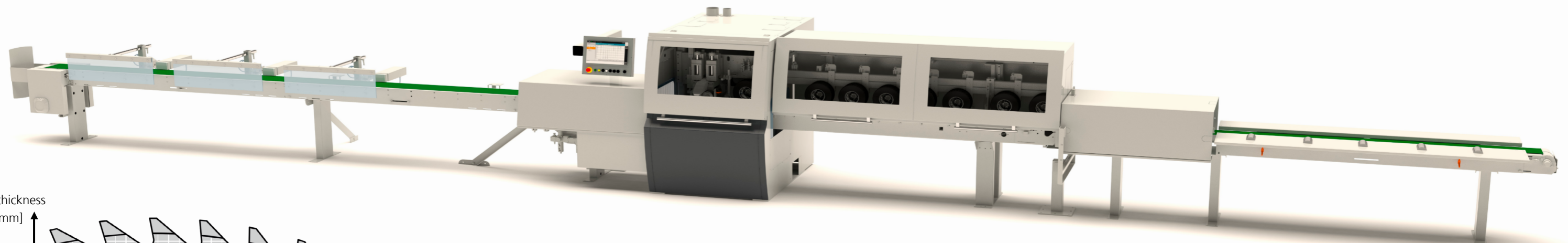


Comfort starts with the operation

All functions and settings can be controlled easily, intuitively and centrally via the OptiCom control system. Via the pressure-sensitive 7", 15.6" or 18" touchscreen the operator gets all information and values clearly readable in national language.

OptiCut 150 DimterLine – The best solution for the cutting of difficult timber qualities

- High flexibility
- Crosscutting large and coarse timber
- Automatic, intelligent waste disposal
- Maximum timber yield by optimization
- High performance thanks to powerful feed system
- Extensive production statistic available
- Sophisticated remote diagnostics and remote maintenance
- Own R&D
- Can be expanded at any time by means of mechanization solutions



Modular system

The modular design allows functions and mechanization solutions to be purchased only when they are actually required.

Subject to technical modifications. The information and illustrations in this brochure also include extras which are not part of the standard package. Protective coverings may have been removed for purposes of photography.

OptiCut 150 series - DimterLine

1217/WEB/200_0001-1/EN



WEINIG

Product Unit Cutting/Gluing

WEINIG DIMTER GMBH & CO. KG
Rudolf-Diesel-Str. 14-16
89257 Illertissen
Germany

Phone +49 7303 15-0
Fax +49 7303 15-199
info-cutting@weinig.com
www.weinig.com